

Dr Chris Mair

*Assistant Director of GP Postgraduate  
Education for East and South-East Scotland*

## Background–

GP Partner Bridge of Allan 20 years

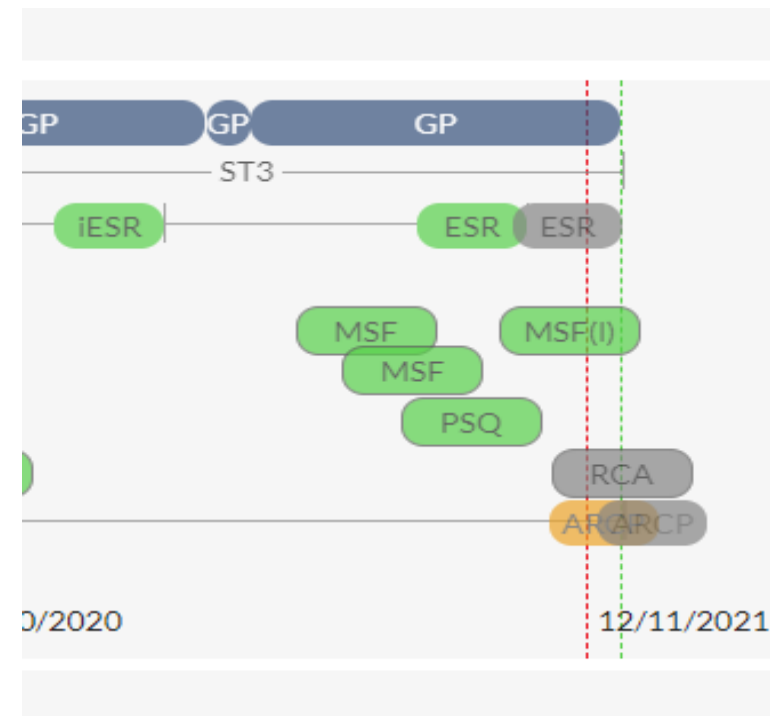
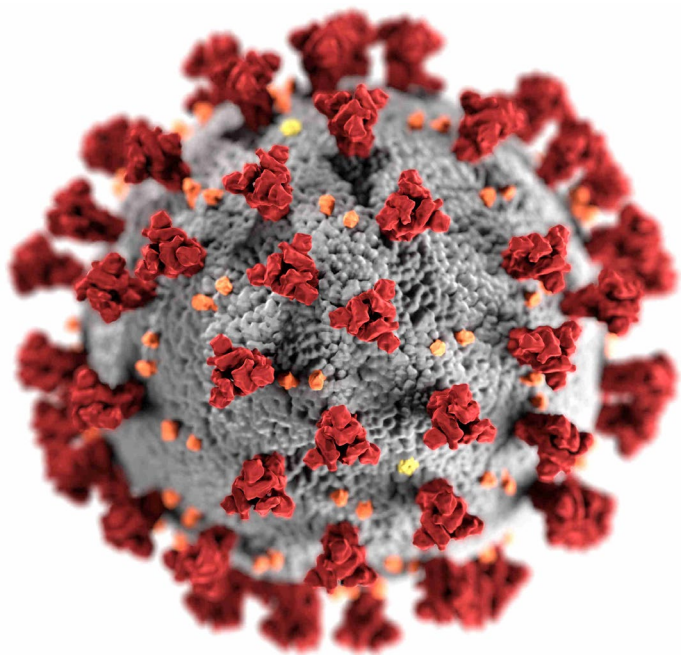
GP /FY2 Trainer

TPD Forth Valley

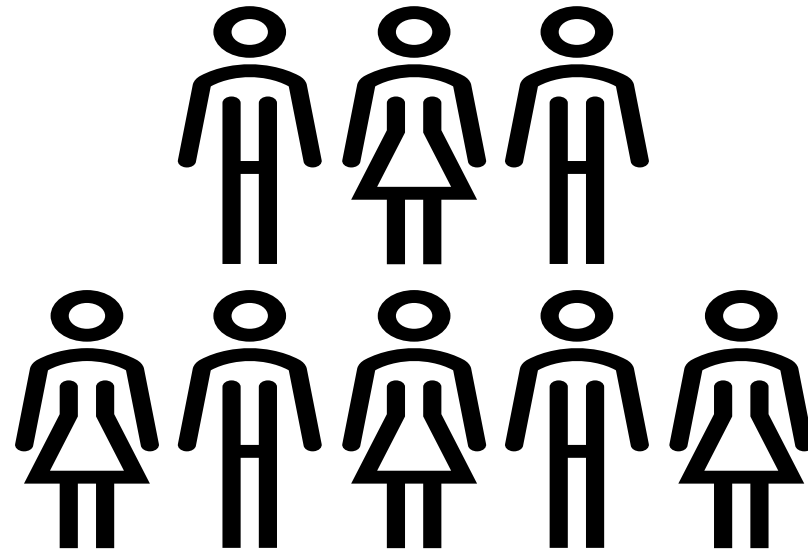
FV OOH Clinical Lead/GP

FV COVID Lead





## INTRODUCING SOUTH-EAST TEAM



## Associate Advisors

Thomasin Mackie – QM, Returners



Victor Smith - QM

Alice Travers- QM, Retainers



## Associate Advisors

Nikki Curry– Programme Planning, ERP, Courses



Susan Buck- Trainee Support, Exam Support, Courses

Alan Johnstone- Trainer Support, Courses



## Training Programme Directors

Borders



Catharine

East



Rachel

Central



Robbie

West



Nicola

Fife



Jonathan

Catharine George [Catharine.George@nhs.scot](mailto:Catharine.George@nhs.scot)

Rachel Wood [Rachel.Wood@nhs.scot](mailto:Rachel.Wood@nhs.scot)

Robbie Bolton [Robbie.Bolton@nhs.scot](mailto:Robbie.Bolton@nhs.scot)

Nicola Duffy [Nicola.Duffy@nhs.scot](mailto:Nicola.Duffy@nhs.scot)

Jonathan Paisley [Jonathan.Paisley2@nhs.scot](mailto:Jonathan.Paisley2@nhs.scot)

Administration [GP.Unit@nes.scot.nhs.uk](mailto:GP.Unit@nes.scot.nhs.uk)



---

---

---

---

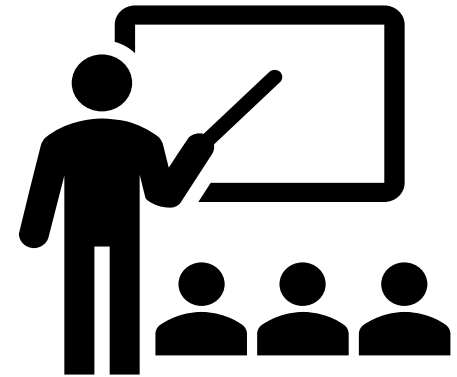
## Trainer Workshops

FTF v TEAMS/ZOOM

Workshop Leads

Workshop Resources

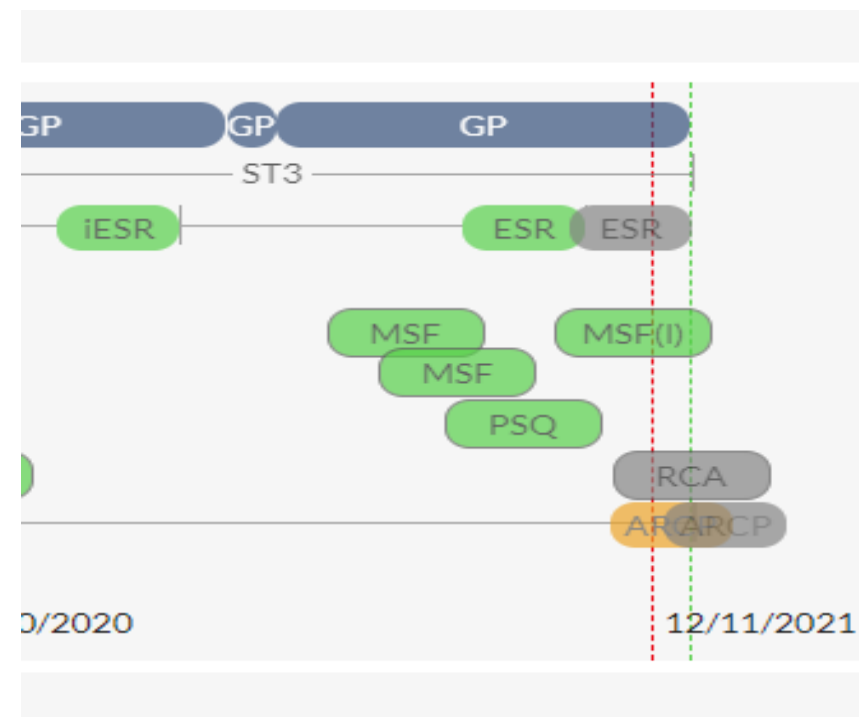
TURAS ES Resources



ESR submission dates – 31<sup>st</sup> May ST3, 14<sup>th</sup> June ST1/2

SOAR declaration sign off

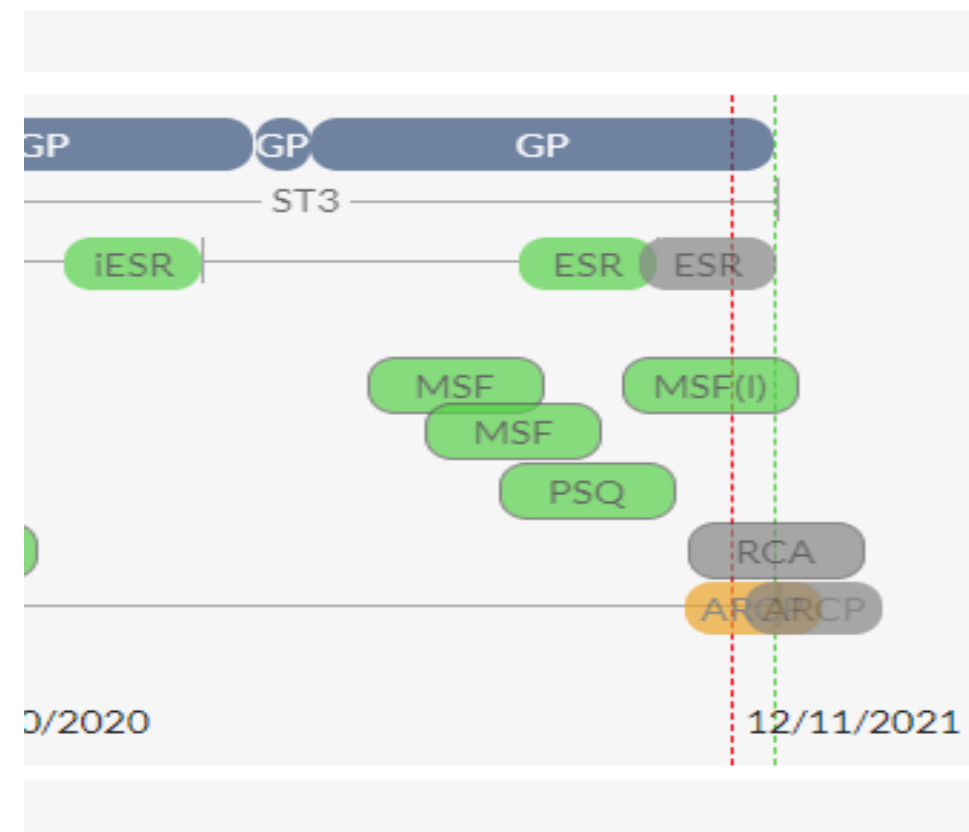
ST1/2 and ST3 checklists



ARCP Dates for Outcome 2 and 3

BLS/ALS changes – September 22

ARCP documents



## New Overall ESR Ratings

ST1, ST2 and midpoint ST3:

- Progress above expected rate
- Progress at expected rate
- Progress below expected rate
- Progress significantly below expected rate

ESR for due CCT date:

- Below expected rate of progress in WPBA
- Competent in WPBA
- Excellent in WPBA

Panel Opinion Request no longer an option

If below expectation at interim review **a full ESR needs done. If assess as below expected rate for any ESR please advise TPD**



ST1 QIP webinars continue to be delivered by QI Team – 3 modules each 6 months



ST3 –Leadership and QIA Course , started in SE, now extended to all Scotland

RCGP view – QIA, Prescribing and Leadership evidence in ST3 should be from separate activities

QIA/QIP must have a least planning for change

## Combined Training

More flexibility introduced on accrediting previous experience towards 3 year GP Training programme

Change in legislation since EU exit – all those completing training can get CCT

CCT – Combined Programme (CCT-CP)

1. ATCF (Accreditation of Transferable Capabilities) – > 12 months in any GMC approved training < 5 years
2. UK Experience – Consultants, SAS doctors
3. Overseas experience - evaluated by RCGP advisor

Up to 12 months can be accredited – normally only 6 months

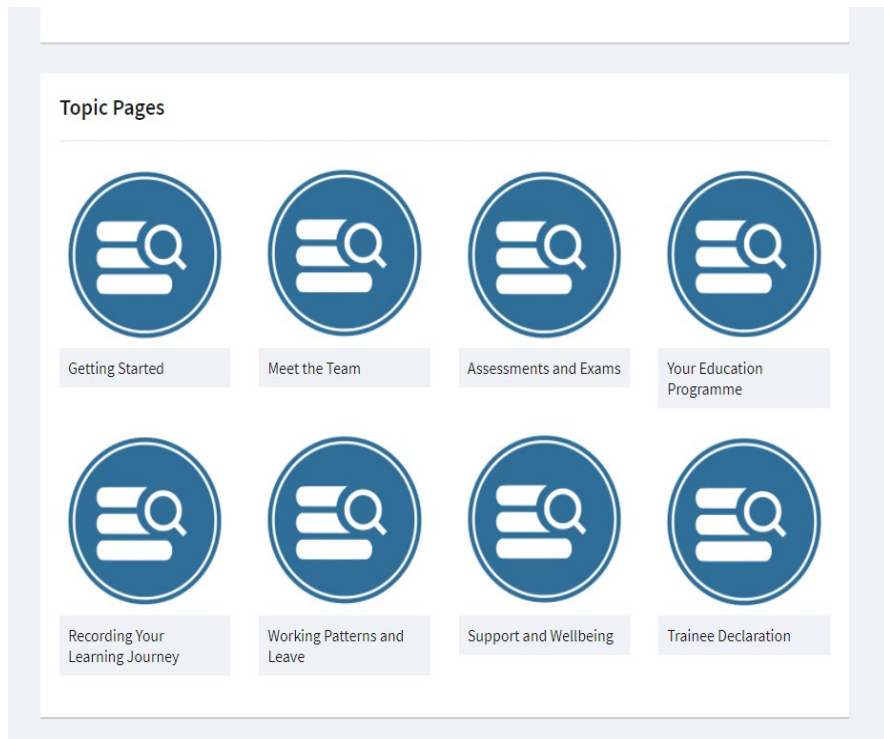
Submit evidence to dedicated section in 14F

Evaluated by Deanery & RCGP and confirmed by ARCP panel at 6 months wte – posts adjusted

**Need full ESR not iESR at 6 months**

### Scheme applications

Scheme	Status	Last update	
Combined Training	RCGP reviewed	16/09/2021 12:54	<a href="#">View</a>



Scotland wide TURAS Learn site

<https://learn.nes.nhs.scot/40369/scotland-deanery-gp-training-st1-induction>

Face to Face Inductions for Trainees

Softer Landing Safer Care

Trainee Support

STEP



## Professionalism/Conduct

RCA conduct

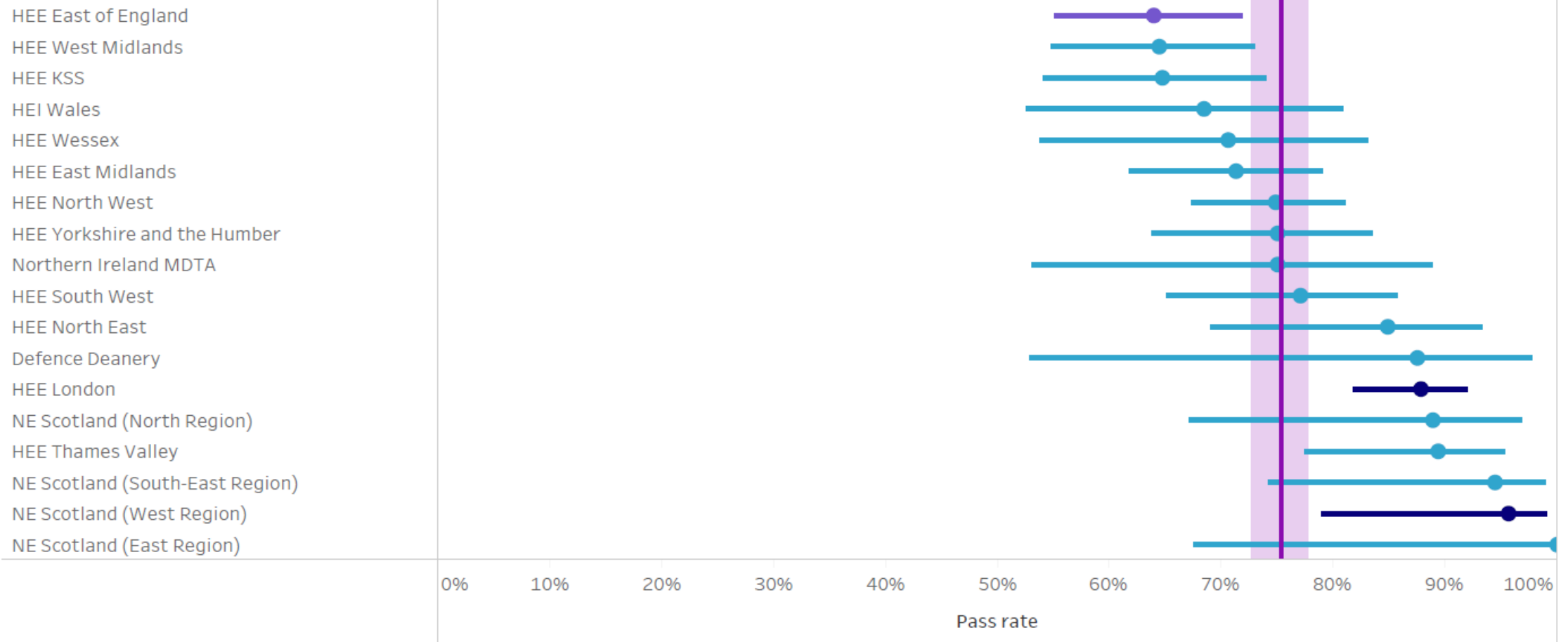
Chaperones

Accessing Results

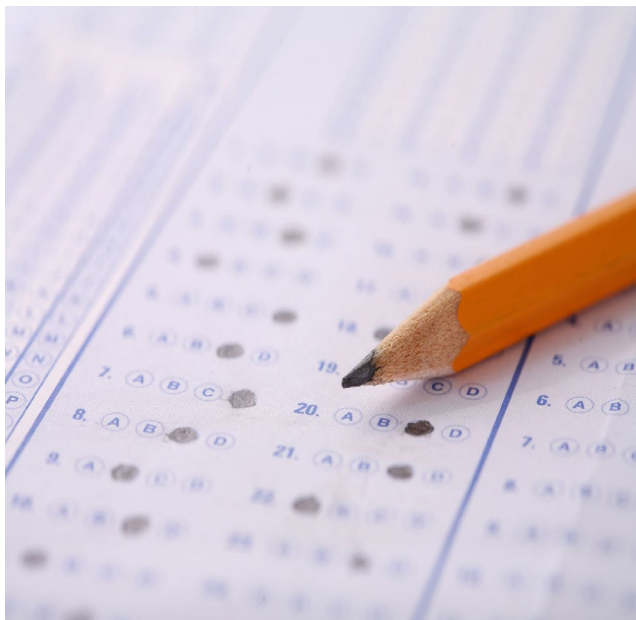
General  
Medical  
Council

## RCA Results – GMC NTS

Deanery/HEE Local Office or Nation



## Exam Support



National RCA support courses delivered by RCGP examiners with NES facilitation

RCA Fails get 1-1 RCA examiner support

National AKT support course recently developed

Enhanced AKT support course for AKT fails

TPD and 1-1 AKT support for multiple fails

## Improvements Needed



Communication/ Listening

ES support through courses, workshops

Trainee Support

Website Resources

