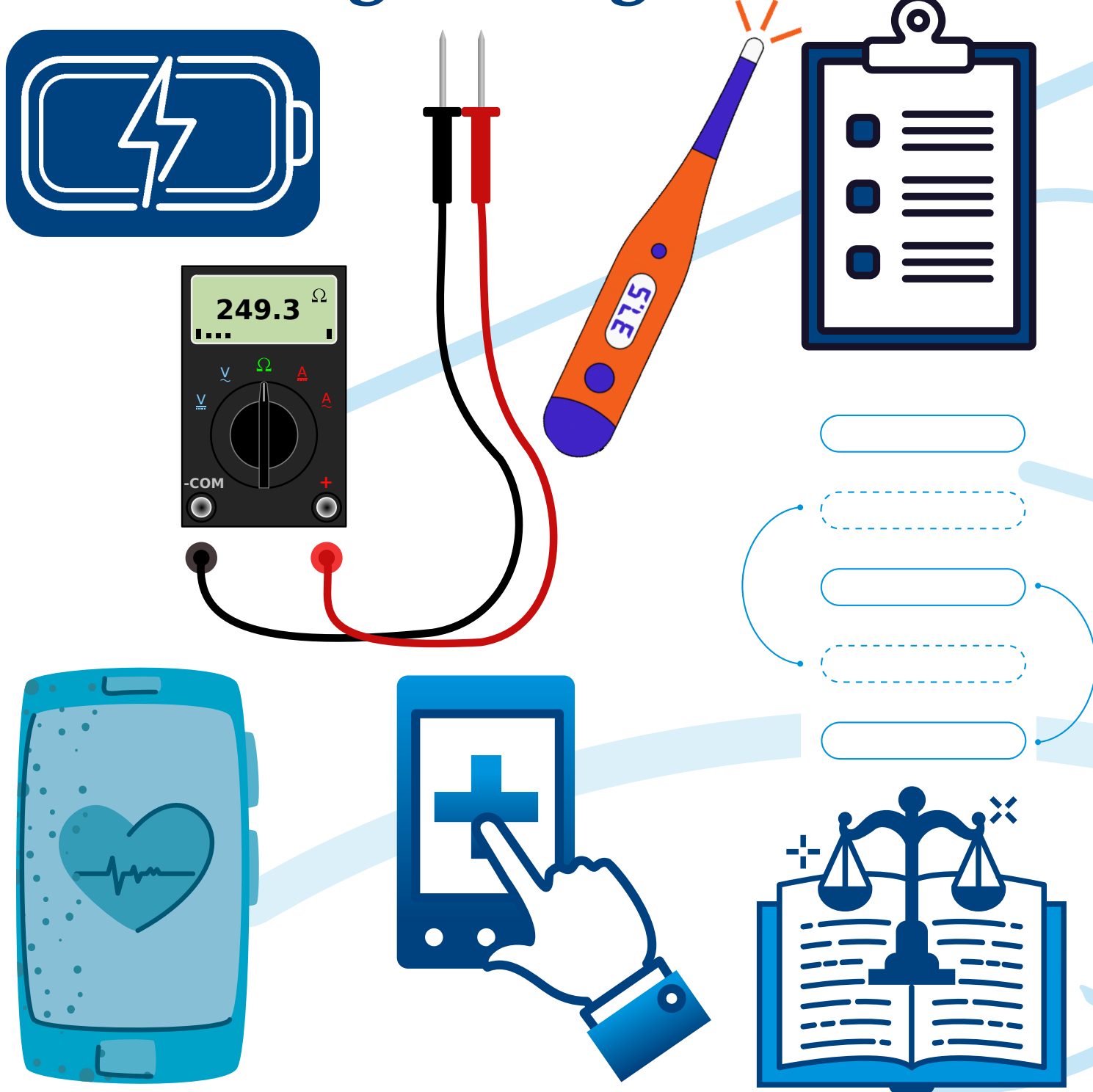


Clinical Engineering: What do they do?

We may take it for granted that our medical test results are right and the complicated equipment used for our treatment will not harm us, but there are people behind that...



Clinical Engineering...

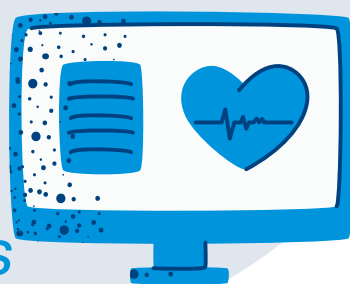


- Repair equipment and regularly maintain it so it does not break while being used.
- Introduce new medical equipment safely, including organising the rollout and training for new devices.
- Work with clinical teams to improve patient care through equipment and pathway optimisation.
- Design equipment that is needed by our Health Board but not available to buy.
- Help clinical teams follow medical device laws.

Clinical Engineers at NHS Lothian manage...

Over 40,000 pieces of equipment including...

Dialysis machines
Infusion pumps
Blood pressure monitors
Anaesthetic machines
ECG machines
Defibrillators

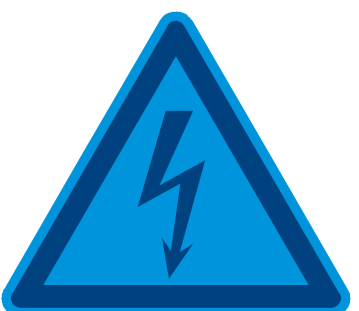


Electrical Safety Testing

Electrical safety testing is important to keep equipment working safely.

Many medical devices are used when we're sedated and work under our skin, removing the human body's best protections against electric shock.

Vulnerable patients need to be protected from harm, so medical equipment has to be checked often and to tight safety limits.



"I've never heard of you!"... You might know us by a few different names:

Medical Physics, Medical Equipment Management, Clinical Technologists, Clinical Scientists...

In NHS Lothian we work in the Medical Physics department, which has lots of different job roles!