

Workshop Session

My Learning ...My Way

Tweeting? Use #HCSWlearn and follow us on @NES_hcsw

In this workshop, you will

- understand more about diversity and how everyone learns differently
- identify solutions to barriers identified in the 2018 HCSW learning survey
- be able to identify your strengths as a learner and educator

Finding Solutions activity



Animal Me

“Animal Me” helps you discover what makes you tick and what you’re good at.

It’s easy to answer and only takes five minutes, log into: <http://animalme.myworldofwork.co.uk/>

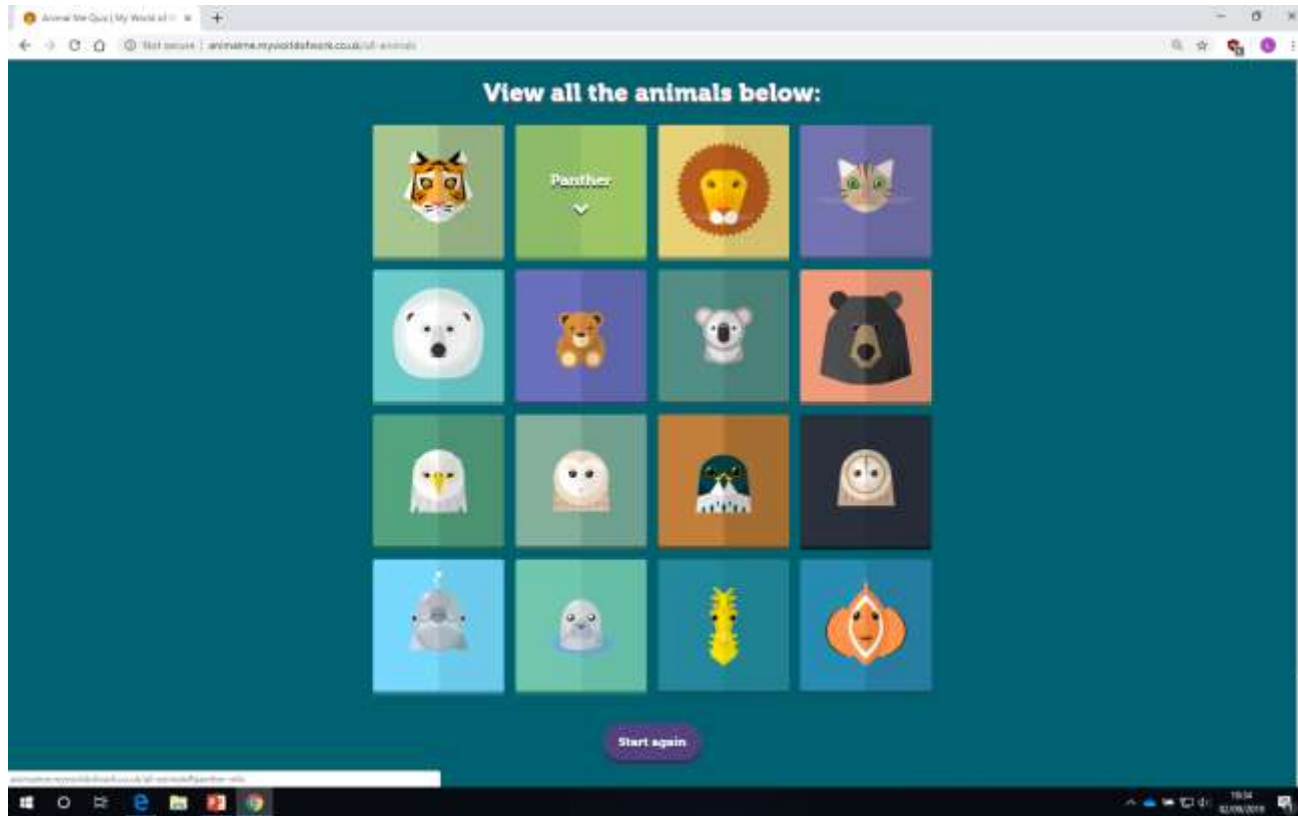
Write down your **animal** and your **motto**.

Find out all about... **YOU!**



Animal Me helps you discover what makes you tick and what you're good at. You'll learn about your personality. Plus – just for fun – you'll find out which animal is most like you. It's easy to answer and only takes five minutes.

Get started!



Which animal are you?

Please return to the main hall for the event
summary, prize draw and close.

This resource may be made available, in full or summary form, in alternative formats and community languages.
Please contact us on **0131 656 3200** or email **altformats@nes.scot.nhs.uk** to discuss how
we can best meet your requirements.



NHS Education for Scotland
Westport 102
West Port
Edinburgh
EH3 9DN
www.nes.scot.nhs.uk

© NHS Education for Scotland 2017. You can copy or reproduce the information in this resource for use within NHSScotland and for non-commercial educational purposes. Use of this document for commercial purposes is permitted only with the written permission of NES.