



Clinical Engineering Programme Shared Services

Dr Stuart Parks
Head of Clinical Engineering GG&C





Clinical Engineering Programme Shared Services

Programme formally Launched April 2017:

- National Medical Equipment
- Managed Introduction of New Technologies
- Health Technology Informatics



Clinical Engineering Programme Shared Services

Programme formally Launched April 2017:

- National Medical Equipment
- Managed Introduction of New Technologies
- Health Technology Informatics



Clinical Engineering Programme Shared Services

Health Technology Informatics:





Clinical Engineering Programme Shared Services

Health Technology Informatics:

Exemplar – Diabetes (CGM)



Clinical Engineering Programme Shared Services

Health Technology Informatics:
A Generic Solution?



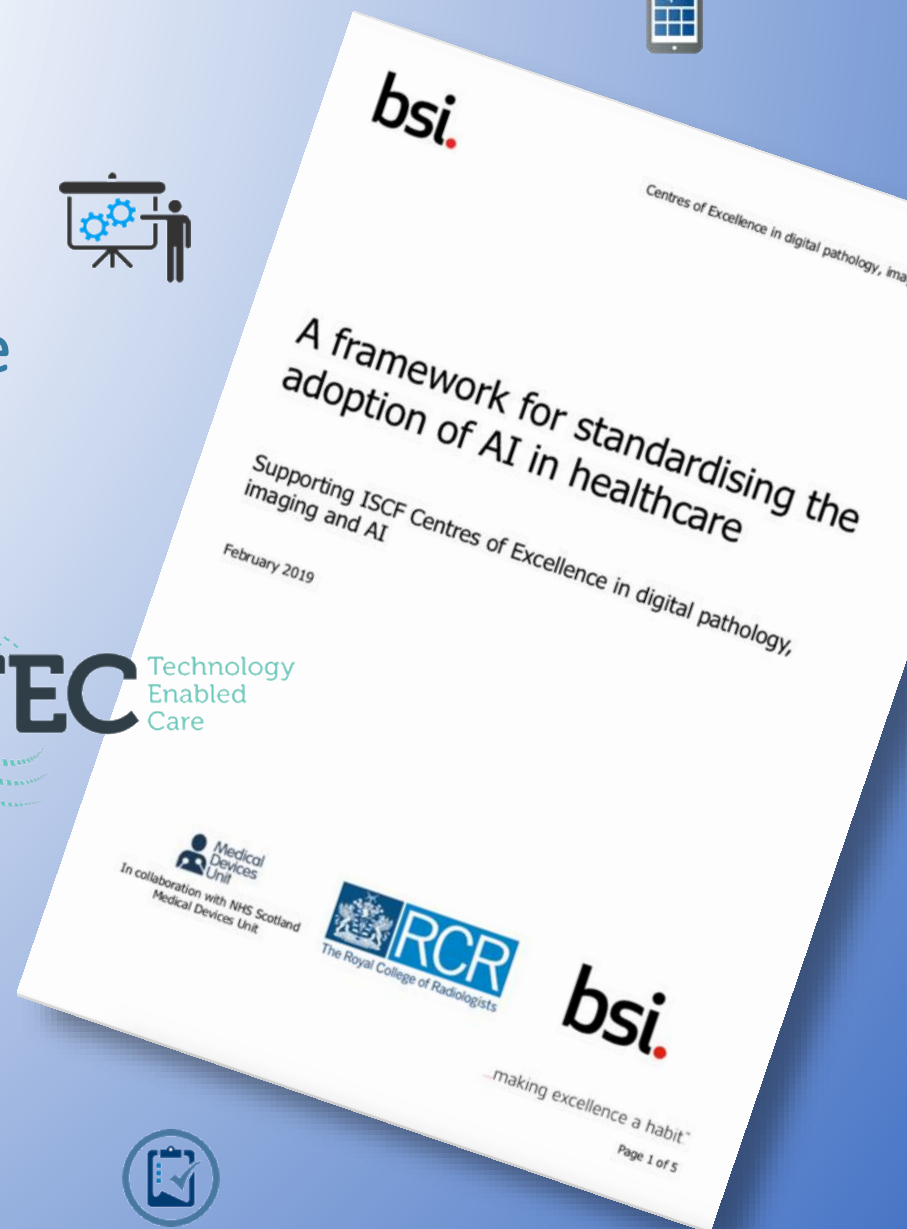
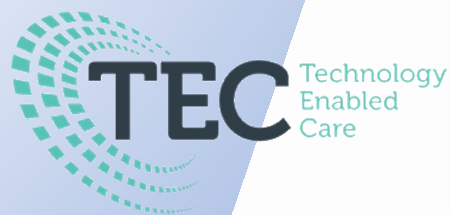


Clinical Engineering Programme Shared Services

Health Technology Informatics:
A More Coherent Approach?



DIGITAL SERVICE



bsi.

Centres of Excellence in digital pathology, ima

A framework for standardising the adoption of AI in healthcare

Supporting ISCF Centres of Excellence in digital pathology,
imaging and AI

February 2019



In collaboration with NHS Scotland
Medical Devices Unit



bsi.

...making excellence a habit[®]

Page 1 of 5



Clinical Engineering Programme Shared Services

Stuart Parks
Head of Clinical Engineering GG&C

