

HCSW Learning Event (North)

Make Learning Work for You

Ready, Steady, Learn

NHS
Education
for
Scotland

Estates and Facilities Hub
A one stop shop for learning
and development

Scan Here:

NHS
Education
for
Scotland

**Business and
Administration Hub**

A one stop shop
for learning and
development

By the end of this session

you should:

- know where to start when making a learning plan
- understand how to use Education Pathways in meaningful PDPR discussions
- be able to identify and understand different types of learning



What you think about learning?

- What was the last piece of learning you did?
- What did you do?
- Why did you want to do it?
- How did you feel about it
- How did you use it



****Did it work for you?**

Getting Started – *My Learning Plan*

- Do you want to learn?
- What do you want to learn?
- Why do you want to learn?
- What are the benefits of learning
 - **to me?**
 - **to the service?**



What is an Education Pathway?

- Personal development and career progression through and between services and jobs
- The level of education needed to support that progression



Education Pathways

Nationally accredited qualifications relevant to job families...

- SCQF Levels
- Specialist Qualification
- Transferable Qualifications
- Management / Leadership Qualifications



Why have Education Pathways?

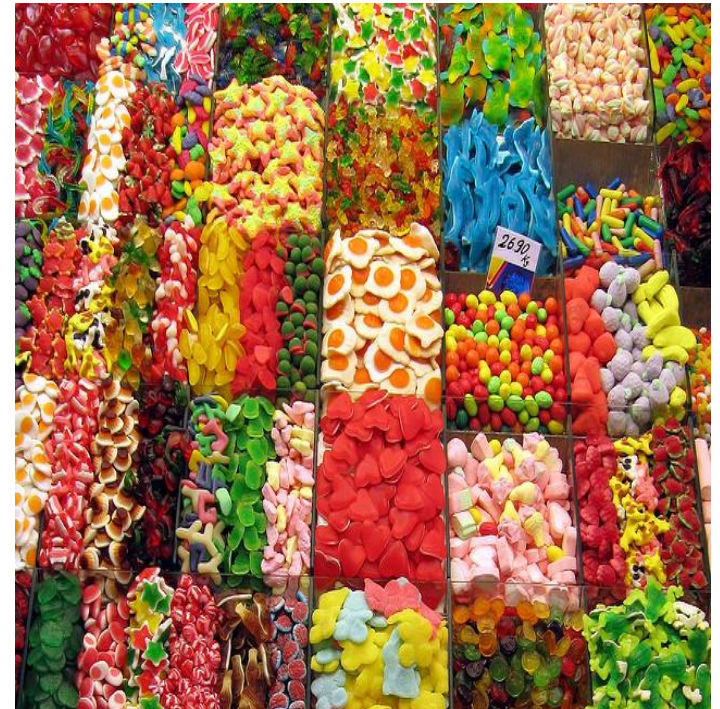
Provides a national recognised framework which supports:

- personal and career development
- well qualified workforce
- workforce and succession planning
- developing the young workforce



Using Pathways to support PDPR discussions & learning

- Pathways are not a ‘shopping list’
- How do you make informed choices
 - **is it the right qualification?**
 - **does it help your personal development and service needs?**



Learning Opportunities

- How to support learning
 - Work based
 - Vocational
 - Academic
- Making the most of learning
 - In house learning
 - Accredited learning
 - Recognition of prior learning



Let's use the pathways

Use the iPad or your smart phones:

- <https://learn.nes.nhs.scot/668/estates-and-facilities-hub> or use QR Code on postcard
- <https://learn.nes.nhs.scot/1978/business-and-administration-hub>
 - Select Education Pathway
 - View the Education Pathway
 - Choose a Pathway

****What are the opportunities?**



Making a Difference



By the end of this session

you should now:

- know where to start when making a learning plan
- understand how to use Education Pathways in meaningful PDPR discussions
- be able to identify and understand different types of learning



The End!



Contact us



asktheteam@nes.scot.nhs.uk



@NES_hcsw

This resource may be made available, in full or summary form, in alternative formats and community languages.
Please contact us on **0131 656 3200** or email **altformats@nes.scot.nhs.uk** to discuss how
we can best meet your requirements.



NHS Education for Scotland
Westport 102
West Port
Edinburgh
EH3 9DN
www.nes.scot.nhs.uk

© NHS Education for Scotland 2018. You can copy or reproduce the information in this resource for use within NHSScotland and for non-commercial educational purposes. Use of this document for commercial purposes is permitted only with the written permission of NES.